



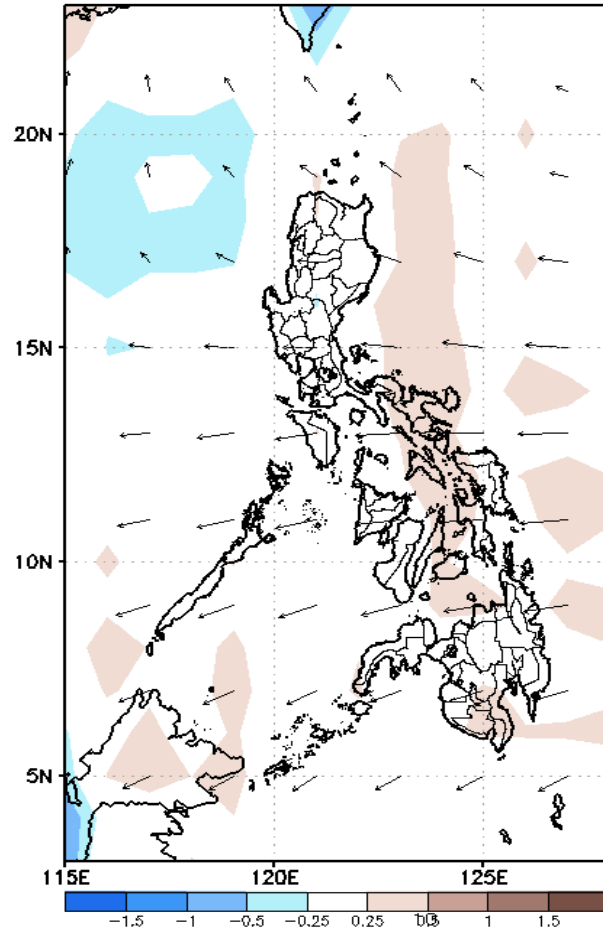
# Week 1 & Week 2 Forecast for the Philippines using GEFS Model



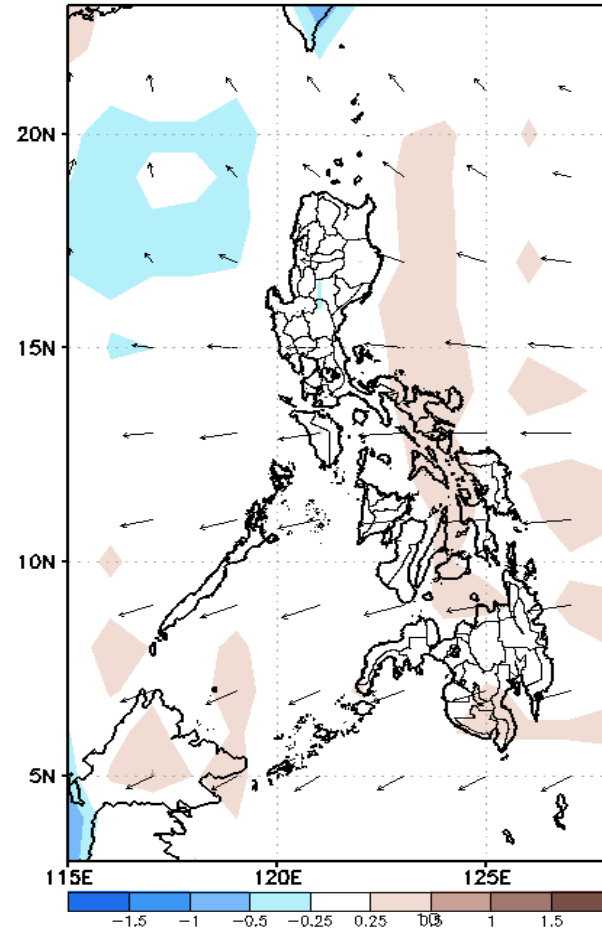
# GEFS Week-1 Forecasts: Divergence & Wind Anomaly

Week 1: Aug 10-16, 2020

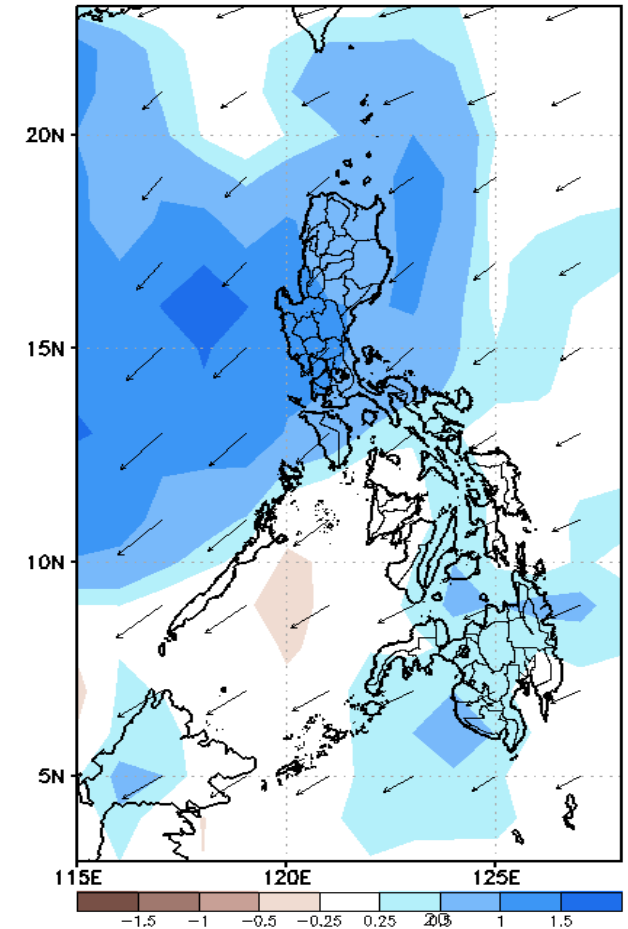
GEFS Week-1 850-hPa Divergence and Wind Anom.  
Valid: 20200810 - 20200816



GEFS Week-1 700-hPa Divergence and Wind Anom.  
Valid: 20200810 - 20200816



GEFS Week-1 200-hPa Divergence and Wind Anom.  
Valid: 20200810 - 20200816

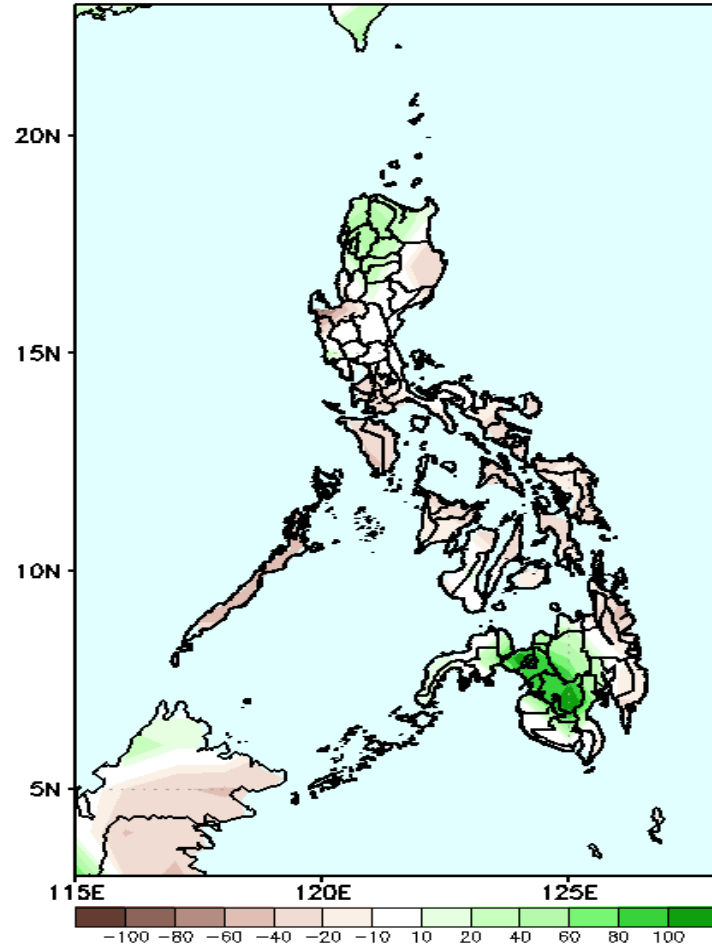


Upper level (200 hPa) Divergence suggest likelihood of heavy precipitation in most parts of Luzon while light precipitation is most likely in Mindanao. Southwest monsoon affecting western section of Luzon while easterlies affecting most parts of the country during the forecast period.

# Precipitation Anomaly and Exceedance Probability > 25/50 mm

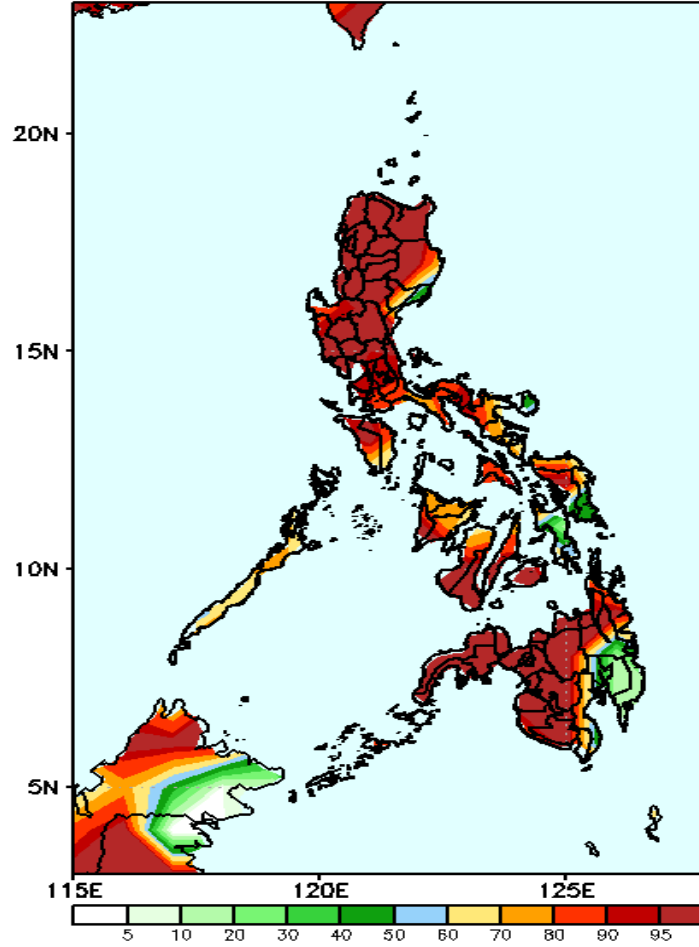
**Week 1: Aug 10-16, 2020**

GEFS Week-1 Precip Anomaly  
Valid: 20200810 - 20200816



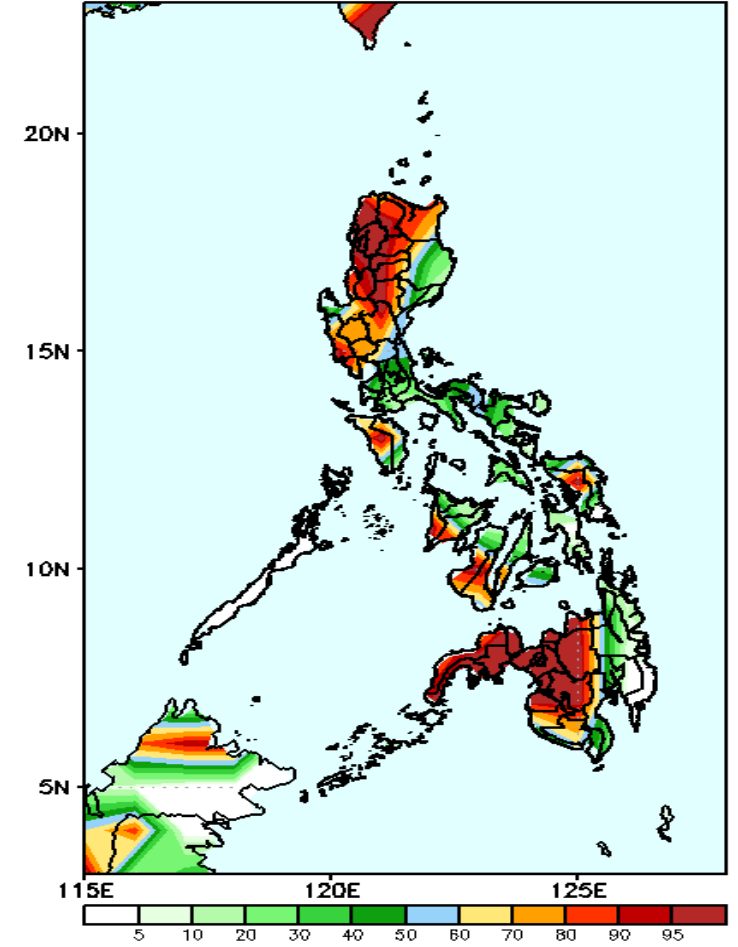
Increase of rainfall of 10-30mm in northwestern parts of Luzon and 40-100mm in Bukidnon, North Cotabato and Lanao provinces is expected during the forecast period.

GEFS Week-1 Exceedance Prob. > 25mm  
Valid: 20200810 - 20200816



High probability of rainfall to exceed 25mm in most parts the country is expected except in Davao Region during the forecast period.

GEFS Week-1 Exceedance Prob. > 50mm  
Valid: 20200810 - 20200816

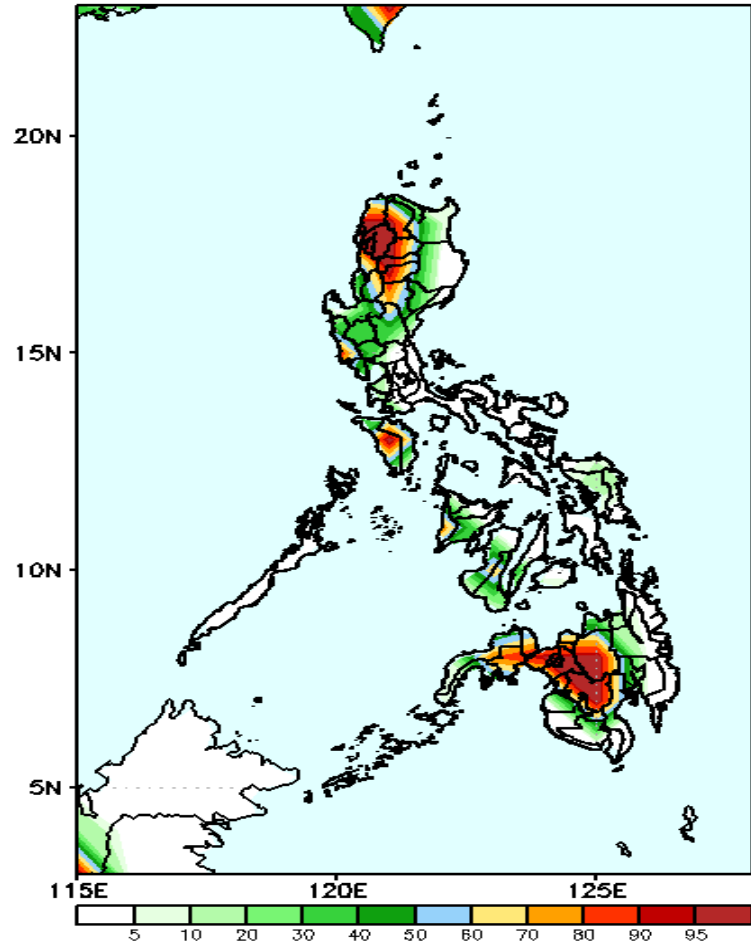


High probability of rainfall to exceed 50mm in most parts of northern and western Luzon, western parts of Visayas and Mindanao is expected while less probability for the rest of the country during the forecast period.

# Exceedance Probability > 100/150/200 mm

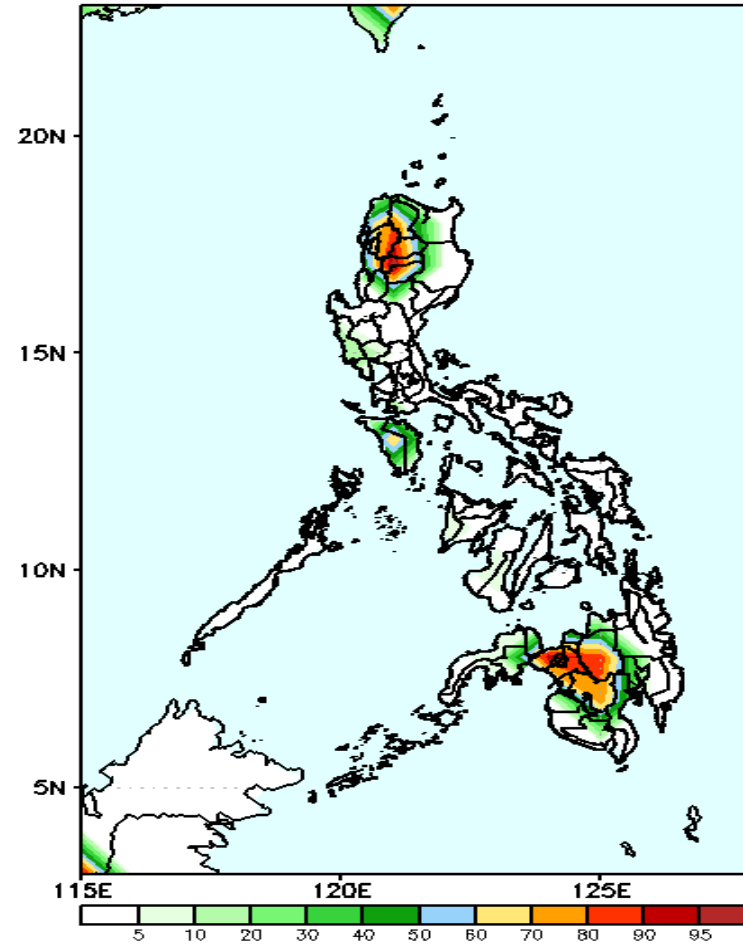
## Week 1: Aug 10-16, 2020

GEFS Week-1 Exceedance Prob. > 100mm  
Valid: 20200810 - 20200816



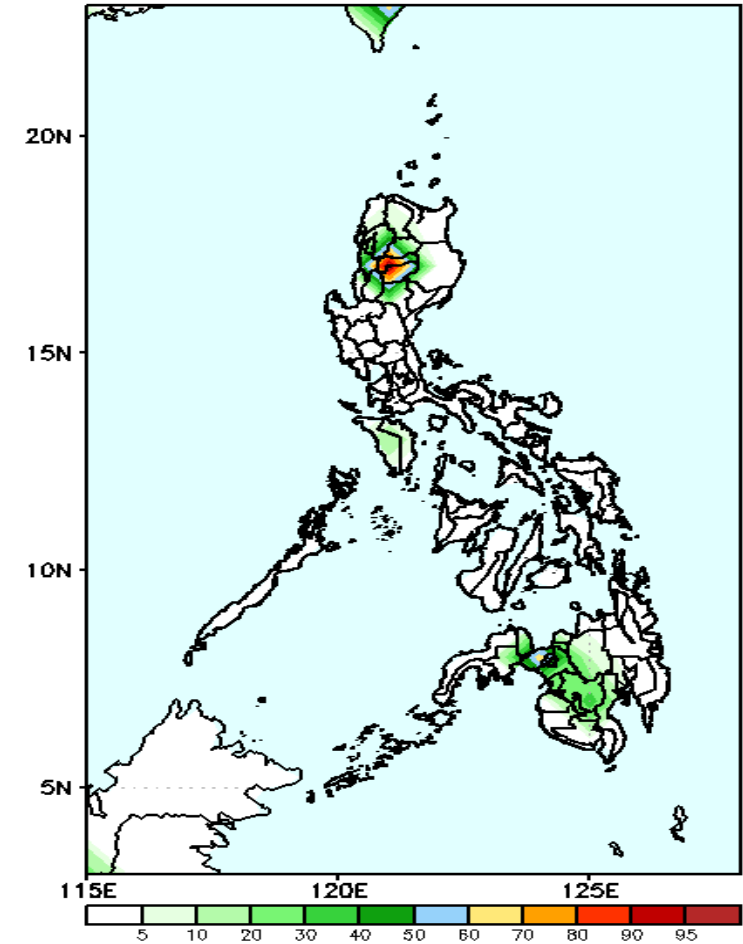
High probability of rainfall to exceed 100mm in northwestern parts of Luzon, Mindoro and in Bukidnon, North Cotabato, Zamboanga del Sur and Lanao provinces while less likely for the rest of the country during the forecast period.

GEFS Week-1 Exceedance Prob. > 150mm  
Valid: 20200810 - 20200816

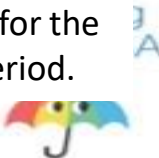


50-90 probability of rainfall to exceed 150mm in Cordillera Region, Bukidnon and Lanao provinces while less likely for the rest of the country during the forecast period.

GEFS Week-1 Exceedance Prob. > 200mm  
Valid: 20200810 - 20200816



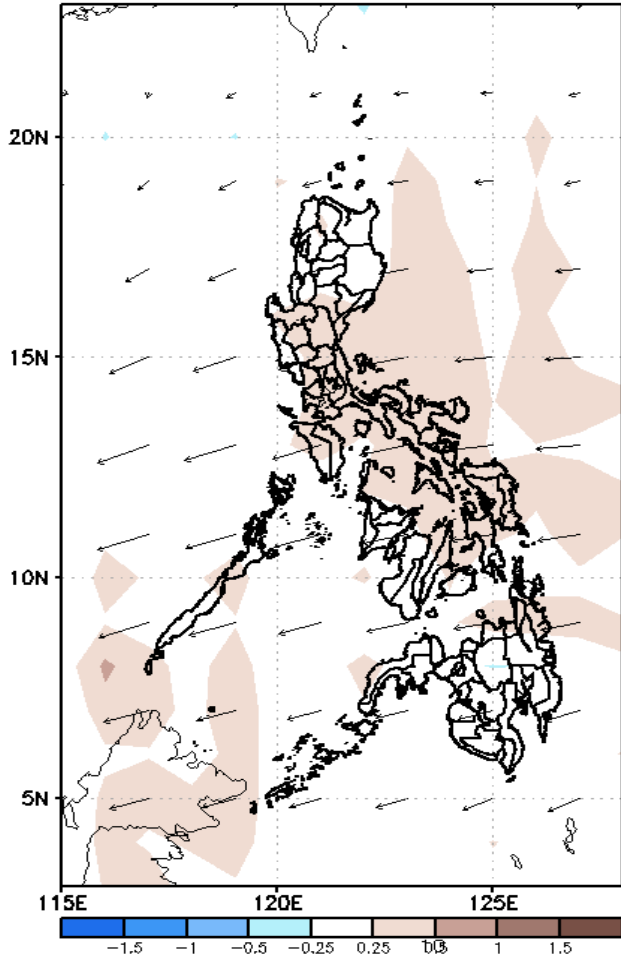
50-90 probability of rainfall to exceed 200mm in Mt. Province & Ifugao while less likely for the rest of the country during the forecast period.



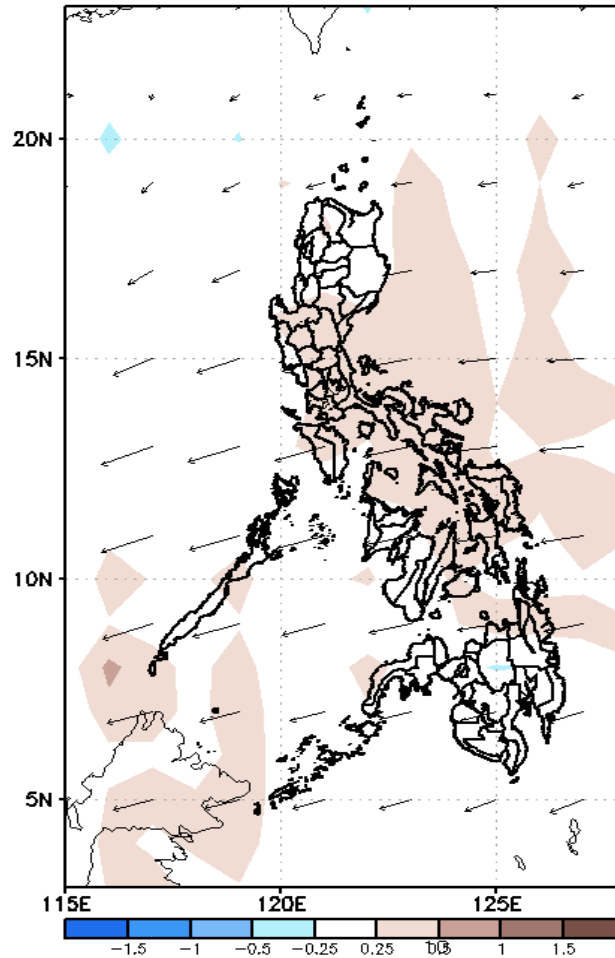
# GEFS Week-2 Forecasts: Divergence & Wind Anomaly

## Week 2: Aug 17-23, 2020

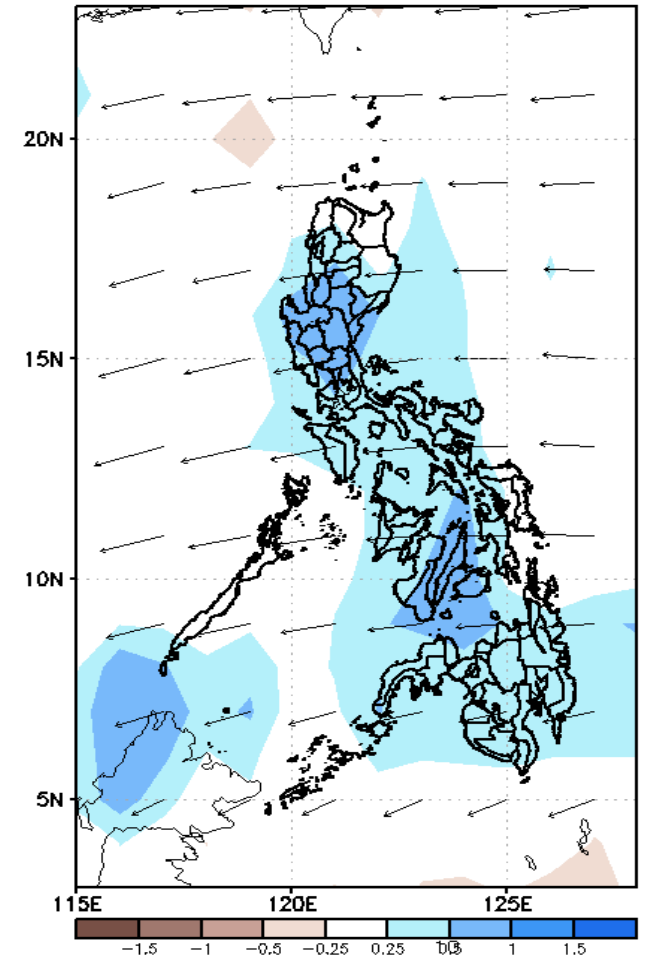
GEFS Week-2 850-hPa Divergence and Wind Anom  
Valid: 20200817 - 20200823



GEFS Week-2 700-hPa Divergence and Wind Anom  
Valid: 20200817 - 20200823



GEFS week-2 200-hPa Divergence and Wind Anom  
Valid: 20200817 - 20200823

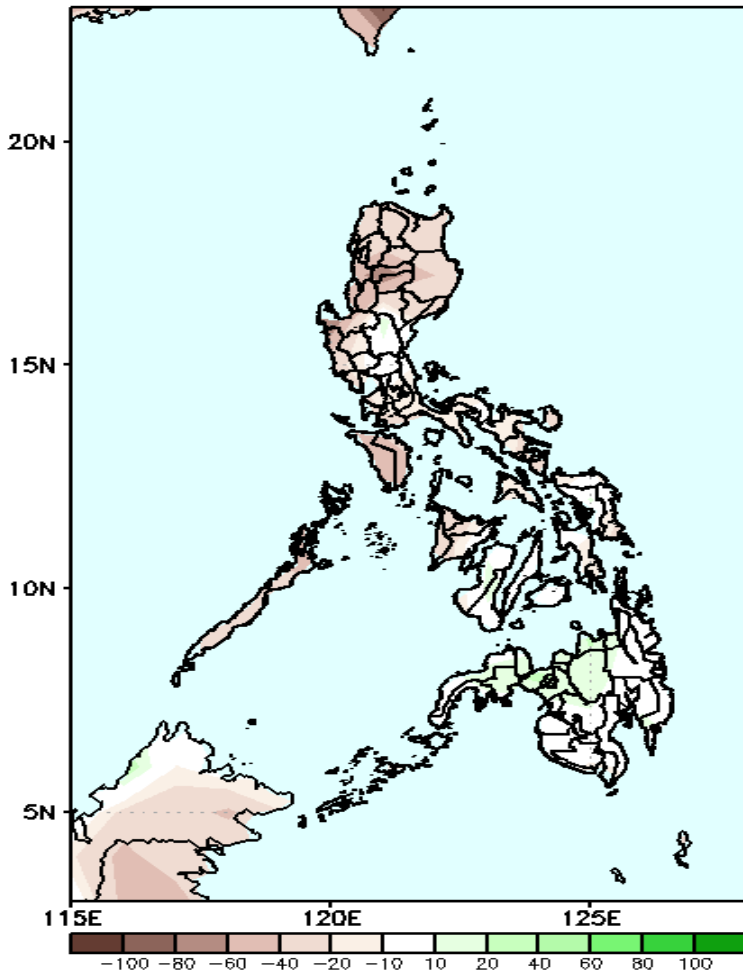


Upper level (200 hPa) Divergence suggest likelihood of precipitation in most parts of the country. Easterlies affecting most parts of the country during the forecast period.

# Precipitation Anomaly and Exceedance Probability > 25/50 mm

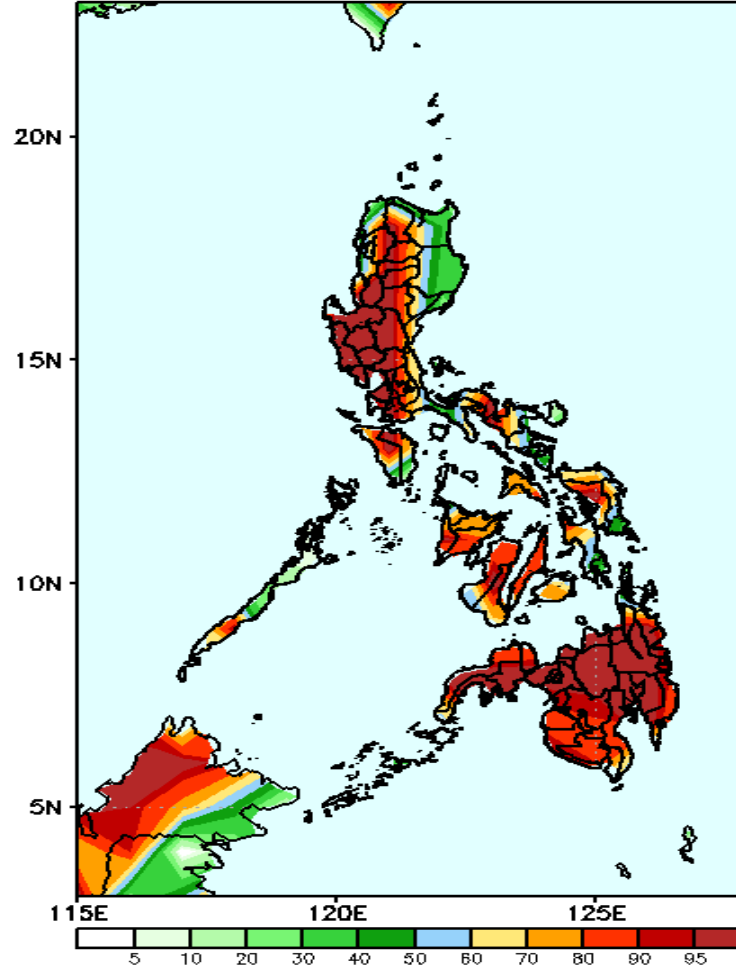
## Week 2: Aug 17-23, 2020

GEFS Week-2 Precip Anomaly  
Valid: 20200817 - 20200823



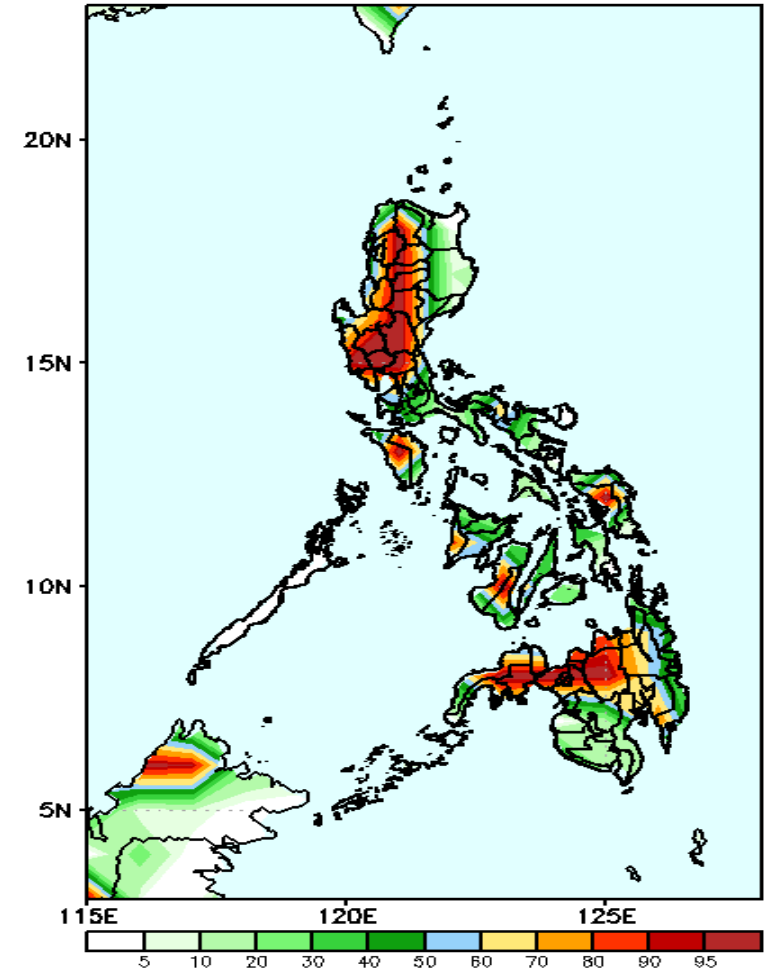
Rainfall deficit of up to 60mm in northern parts of Luzon and Mindoro while increase of rainfall of 20-60mm in most parts of Mindanao is expected during the forecast period.

GEFS Week-2 Exceedance Prob. > 25mm  
Valid: 20200817 - 20200823



High probability of rainfall to exceed 25mm in most parts of the country is expected except in the eastern parts of Luzon during the forecast period.

GEFS Week-2 Exceedance Prob. > 50mm  
Valid: 20200817 - 20200823



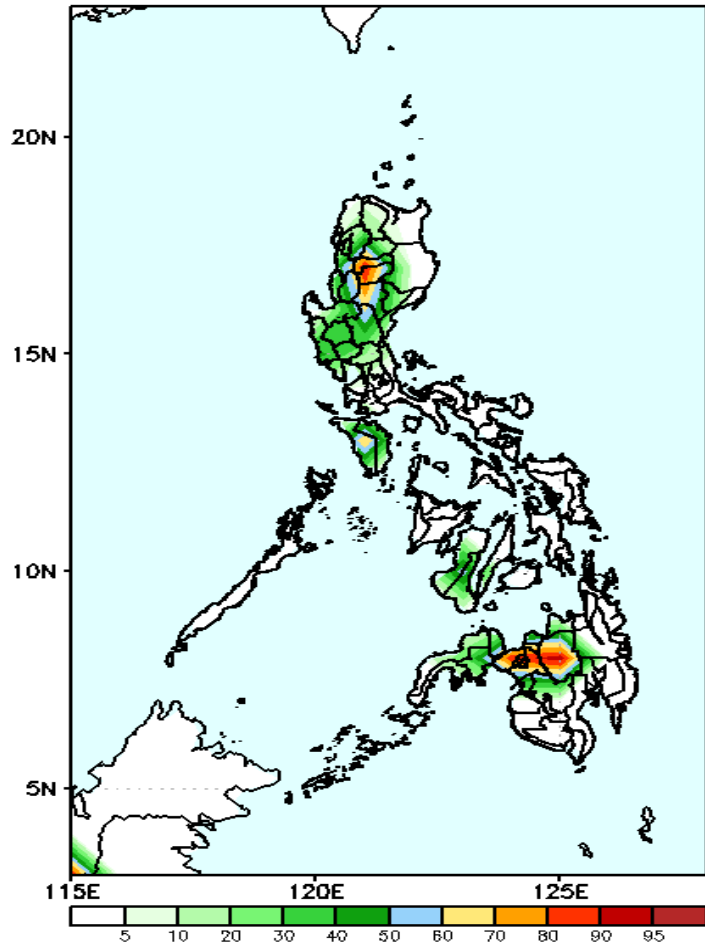
High probability of rainfall to exceed 50mm in most parts of western Luzon, in western Visayas and Samar, northern Mindanao and Zamboanga Peninsula while less likely for the rest of the country during the forecast period.



# Exceedance Probability > 100/150/200 mm

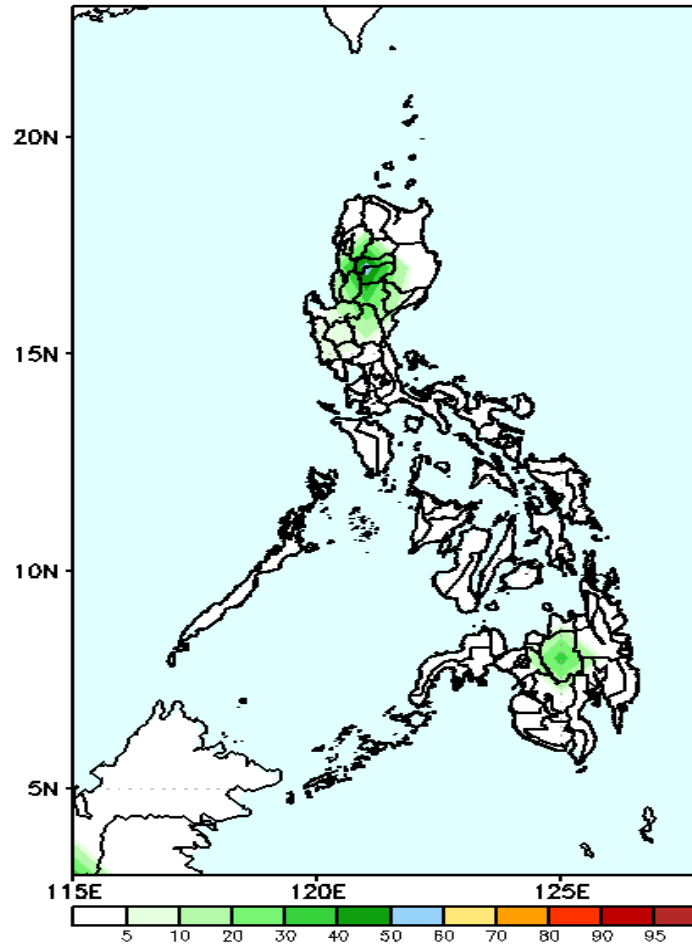
## Week 2: Aug 17-23, 2020

GEFS Week-2 Exceedance Prob. > 100mm  
Valid: 20200817 - 20200823



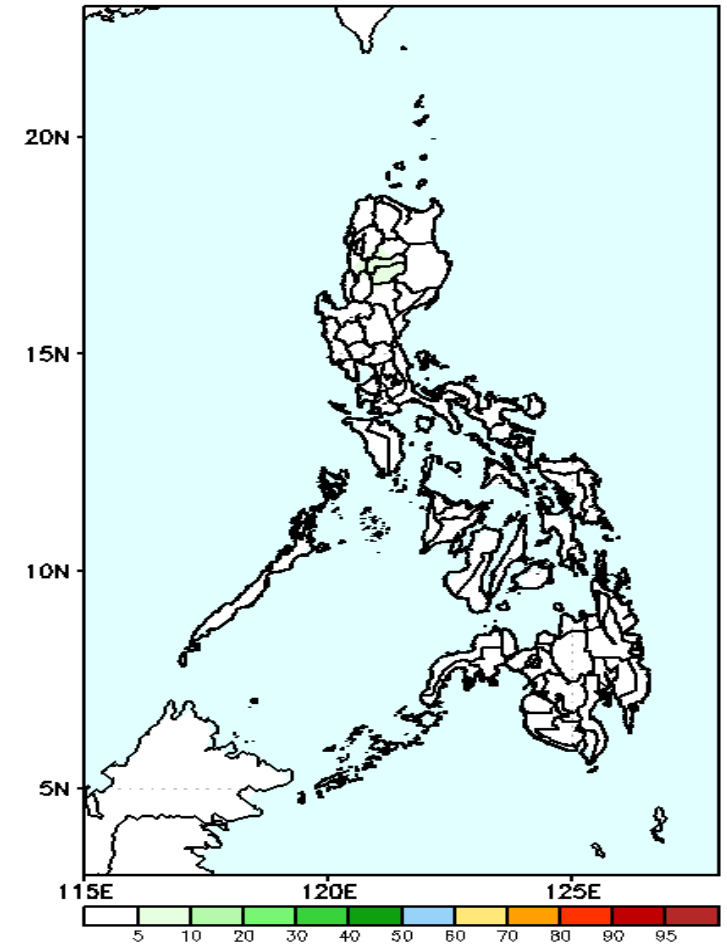
50-90% probability of rainfall to exceed 100mm in Mt. Province, Ifugao, Nueva Viscaya, Mindoro, Bukidnon and Lanao del Sur while less likely for the rest of the country during the forecast period.

GEFS Week-2 Exceedance Prob. > 150mm  
Valid: 20200817 - 20200823



Less probability of rainfall to exceed 150mm in most parts of the country during the forecast period.

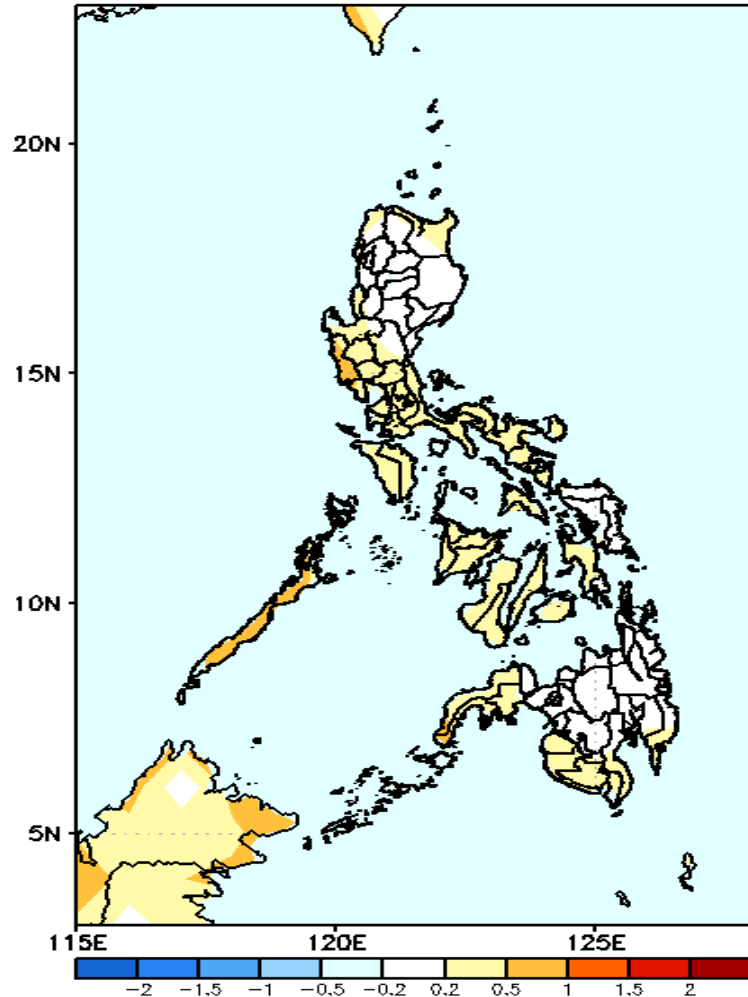
GEFS Week-2 Exceedance Prob. > 200mm  
Valid: 20200817 - 20200823



Less probability of rainfall to exceed 200mm in most parts of the country during the forecast period.

# GEFS Week-1 & 2 Forecasts: T2m Anomaly

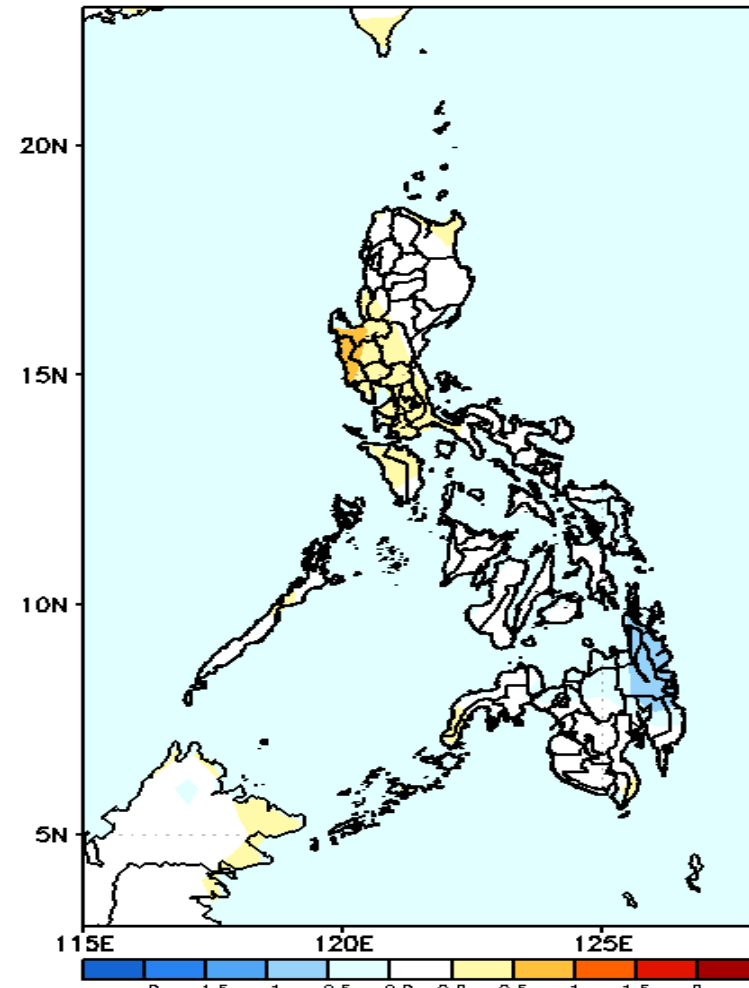
GEFS Week-1 T2m Anomaly  
Valid: 20200810 - 20200816



**2m Temperature Week 1: Aug 10-16, 2020**

Average to slightly warmer than average surface air temperature will likely experience in most parts of the country during the forecast period.

GEFS Week-2 T2m Anomaly  
Valid: 20200817 - 20200823



**2m Temperature Week 2: Aug 17-23, 2020**

Average to slightly warmer than average surface air temperature will likely experience in most parts Luzon while Average to slightly cooler temperature in Mindanao especially in the eastern parts during the forecast period.